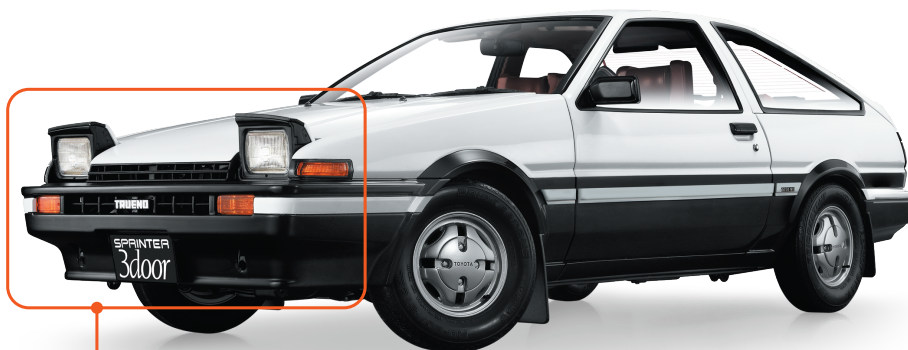


## Issue 1

# Assemble the Front Fascia

Start with the retractable headlights, the signature feature of the Trueno. Be careful to distinguish left and right parts as you proceed with the assembly.



※ In this guide "Left" or "(L)", and "Right" or "(R)", refer to the direction as viewed from the driver's seat.

View the follow-along video

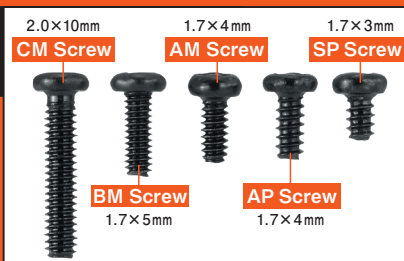


- 1-A Front Bumper
- 1-B Headlamp Lens (L)
- 1-C Headlamp Lens (R)
- 1-D Headlamp Reflector (L)
- 1-E Headlamp Reflector (R)
- 1-F Headlamp Housing (L)
- 1-G Headlamp Housing (R)
- 1-H Retractable Headlamp Cover (L)
- 1-I Retractable Headlamp Cover (R)
- 1-J Retractable Headlamp Visor (L)
- 1-K Retractable Headlamp Visor (R)
- 1-L Front Turn Signal Lens×2
- 1-M Front Turn Signal Housing (L)
- 1-N Front Turn Signal Housing (R)
- 1-O TRUENO Emblem
- 1-P License Plate
- 1-Q License Sticker×3
- AP Screw (1.7×4 mm)×15 (3 Spare)
- Included Tool Phillips Screwdriver #0



## Screw Types and Usage

In this manual, screws are labeled with two-letter codes such as "AP," "SP," or "BM," which indicate the type of screw head, thread shape, and length. The numbers in parentheses in the parts list indicate the screw size, shown as diameter × length (mm). Each screw is carefully selected according to the part it fastens and the material of the component, so always use the screw specified in the instructions. For spare screws, it is recommended to store them in a zippered plastic bag, sorted by type. This makes them easy to use if any screws are lost during assembly.



An example of screws used in this manual: Issue 1 uses only AP screws, but in future assemblies, screws of various lengths and shapes will be required. The two-letter code for each screw indicates the head shape, thread pitch, and the material or application for which the screw is intended.

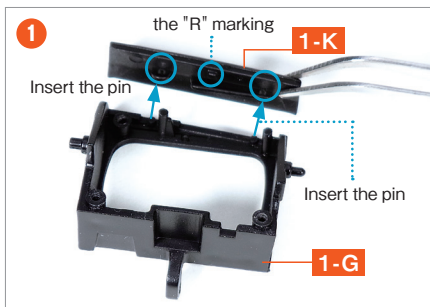


## Precision Tweezers

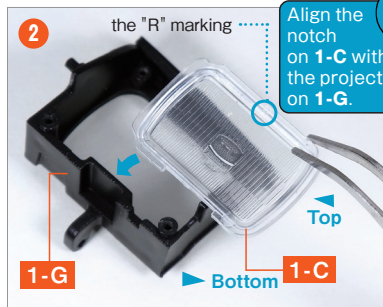
Fine-tipped tweezers are useful not only for firmly gripping small parts, but also for accurately positioning components while checking alignment, as when applying the license sticker in this issue. It is recommended to have at least one pair on hand.



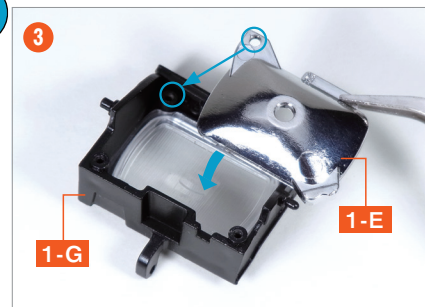
## step 1 Assembling the Right Retractable Headlamp



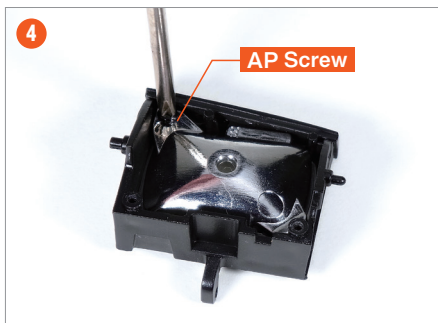
Insert the two pins of the **Headlamp Housing (R) 1-G** into the circled holes of the **Retractable Headlamp Garnish (R) 1-K**.



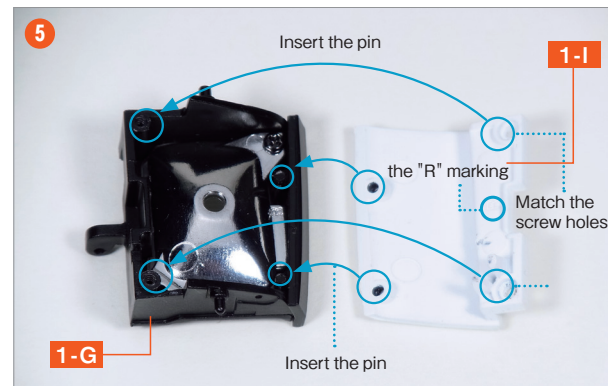
Turn the **Headlamp Lens (R) 1-C** upside down, orient the notch downward, and set it onto the inner projection of part **1-G**.



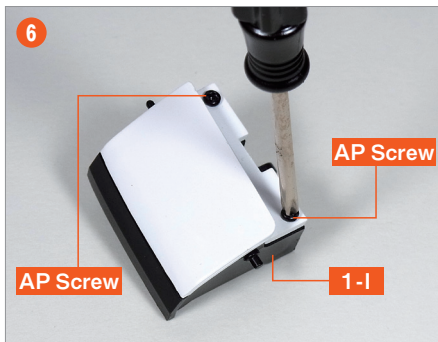
Place the **Headlamp Reflector (R) 1-E** inside part **1-G**, overlapping it.



Align the screw holes and fasten with one **AP screw**.



Place the **Retractable Headlamp Cover (R) 1-I** over the assembly from step 4.



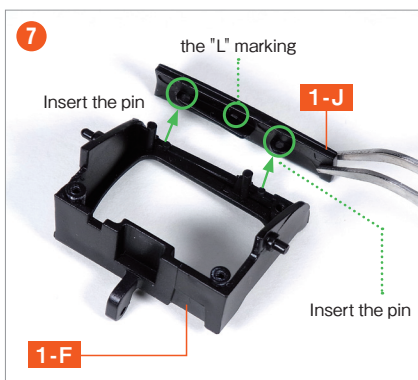
While holding the parts from step 5 to prevent them from coming apart, turn the assembly over, align the screw holes, and fasten with **AP screws** at the two positions as shown.



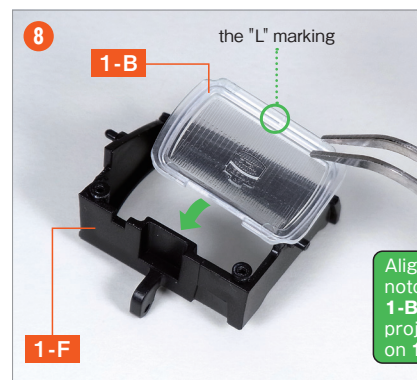
### Tips for Tightening Screws

Hold the screwdriver perpendicular to the screw. Apply about 80% of the force as downward pressure and 20% as turning force, keeping the driver straight as you tighten. Be careful not to overtighten, as this may strip the screw head and prevent proper fastening.

## step 2 Assembling the Left Retractable Headlamp



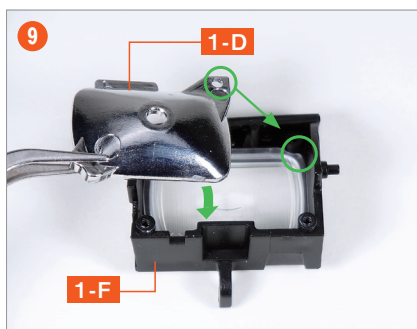
Insert the two pins of the **Headlamp Housing (L) 1-F** into the circled holes of the **Retractable Headlamp Visor (L) 1-J**.



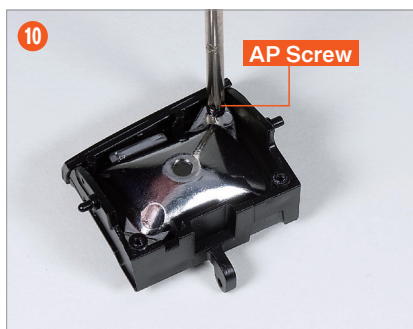
Turn the **Headlamp Lens (L) 1-B** upside down, orient the notch downward, and set it onto the inner projection of part **1-F**.

Align the notch on **1-B** with the projection on **1-F**.

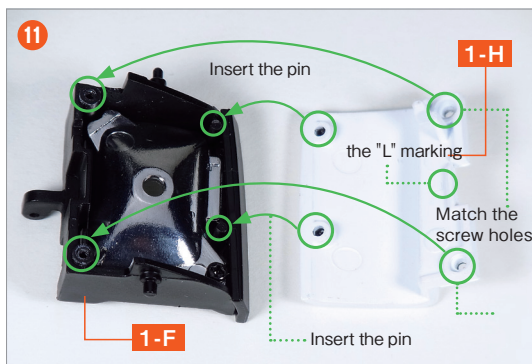




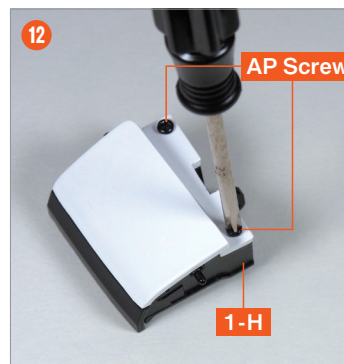
Place the **Headlamp Reflector (L) 1-D** inside part **1-F**, overlapping it.



Align the screw holes and fasten with one **AP screw**.

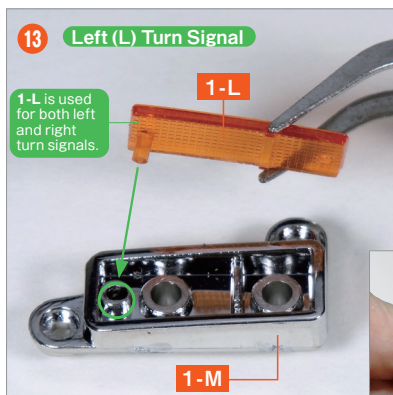


Place the **Retractable Headlamp Cover (L) 1-H** over the assembly from step 10.



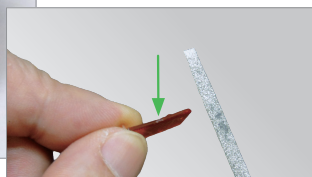
While holding the parts from step 11 to prevent them from coming apart, turn the assembly over, align the screw holes, and fasten with **AP screws** at the two positions as shown.

## step 3 Attaching the Turn Signal Lens to the Front Bumper

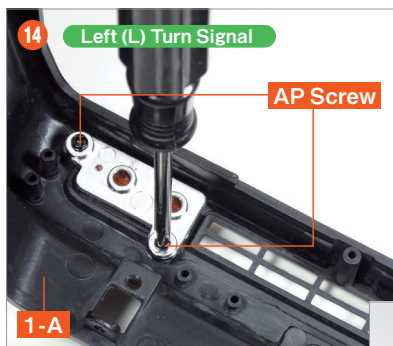
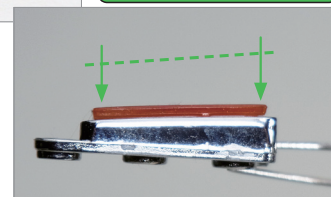


Insert the pins on the back of the **Front Turn Signal Lens 1-L** into the circled holes of the **Front Turn Signal Housing (L) 1-M** as shown in the photo, and secure it in place.

※If any projections remain on the sides of the parts, file them down with a diamond file or similar tool.

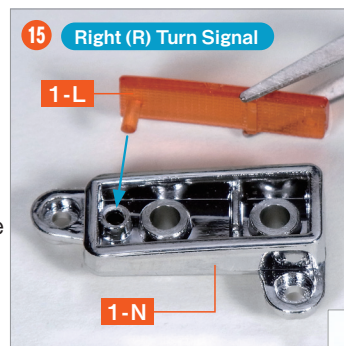


The hole in **1-M** and the pin on **1-L** are angled when viewed from the side. Be careful to insert the pin evenly, matching the angle.



Align the screw holes and fit the left turn signal assembly from step 13 into the square hole on the left side of the back of **Front Bumper 1-A**. Fasten it with AP screws at the two positions shown.

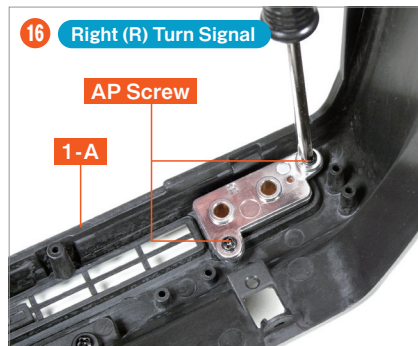
※If the turn signal is difficult to insert, slightly file the top and bottom of the bumper hole from the back, rounding the inner corners with a diamond file or similar tool.



Repeat step 13 to fit the other **Turn Signal Lens 1-L** into the **Front Turn Signal Housing (R) 1-N**.



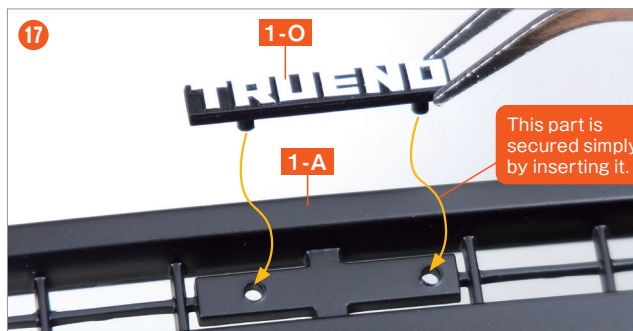
Just as in step 14, align the screw holes and fit the right turn signal assembly from step 15 into the square hole on the right side of the back of **Front Bumper 1-A**. Fasten it with **AP screws** at the two positions as shown.



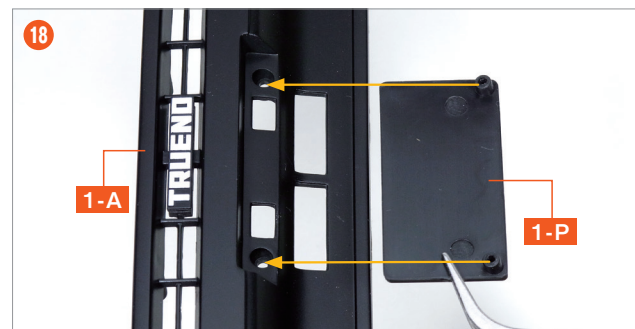
step complete



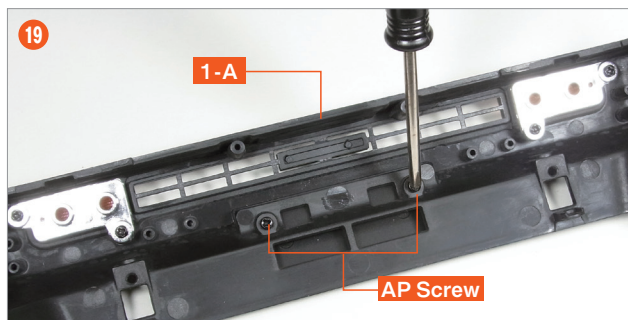
## step 4 Attaching the TRUENO Emblem and License Plate



Insert the pins of the **TRUENO Emblem 1-O** into the center hole of the grille on **Front Bumper 1-A**, orienting it as shown.



Align the screw holes on the back of the **License Plate 1-P** with the holes on **Front Bumper 1-A** as shown, and fit it into place.



While holding the license plate to prevent it from coming loose, turn the front bumper over and fasten it with **AP screws** at the two positions as shown.



Remove any dust or debris from the license plate, peel off the backing paper from the **License Sticker 1-Q**, and apply the sticker onto the license plate.

## Complete!

The completed front bumper and retractable headlamps will be attached to the main body in a later issue. Until then, store them carefully to avoid losing them. Also, keep the two remaining License Stickers 1-Q as spares for future use.

